

# STANDISH VILLAGE HALL



## INTRODUCTION

Standish Village Hall is a historic 700 year old Grade II listed building which has been extensively refurbished to provide a modern, comfortable and well equipped venue for private and corporate functions of all kinds. It is easy to find being located in Standish Lane adjacent to the main B4008 road between Gloucester and Stonehouse. It is 2 miles south of the M5, and 1 mile north of Stonehouse, next to Standish Church with its distinctive spire. Postcode: GL10 3DW.



## Points to note:

- 1) The Hall is on the 1st floor up steep narrow stairs, with toilets on the ground floor. There is a stair lift for which advance notification of use is required.
- 2) The maximum permitted numbers are: 60 seated, 100 standing.
- 3) There is a fully fitted, well equipped modern kitchen (see details on separate page)
- 4) There is a full set of cutlery, crockery, glass and tableware to cater for 60+ persons.
- 5) The Hall has a full Premises Licence for the sale of alcohol, the performance of music (both live and recorded) and the provision of late night refreshments up to 23.30 p.m. (While there is no “bar” it is possible to use an area of the ante room to set one up)
- 6) The premises are hired as “room only” – users are required to do their own setting up of tables and chairs – and to put it all away afterwards! (and wash up/vacuum/clean!)
- 7) The Hall is not hired out for parties for ages between 13 and 21.

## Hall Hire Rates:

Standard Charge: .....	£12 per hour
(Standish Residents: .....	£9.00 per hour)
Weekend or extended Hire: .....	POA
Company/Corporate rate (for conferences/meetings): .....	£15 per hour

PLUS: a £50 refundable damage retainer is required for all bookings (including Standish residents).

N.B.

Standish village events open to all residents:	Free of Charge
Charity fund raising functions:	50% of the Standard rate
Regular bookings for Clubs and classes:	Price on application

All hires must complete a booking form to confirm their booking – a copy can be downloaded from the website at [www.standishvillage.co.uk](http://www.standishvillage.co.uk)

# STANDISH VILLAGE HALL : Tableware, Furniture and sample Table lay-outs

**Tableware available:** (for quantities see separate inventory list)



Place setting: there is enough to cater for 60+ persons

## FURNITURE: The Hall has:

6 large round tables (5ft 6 ins in diameter) which will seat 10 comfortably, and 10 rectangular trestles (6ft x 2ft 6ins) which will seat 6-8, or which can be combined to create long rows, large rectangles or a large open square, seating 16 – 24 (or more depending on your imagination!)

## Examples of Table settings and layouts

Round Table setting (x 10 people)



Rectangular Setting (x 16 people)



New Year's Eve Party - Setting for 60 (6 x 10 rounds)



Buffet set up in ante-room



Dimmable Lighting offers various "mood" settings



**Dancing:** there is a self assembly parquet dance floor (4m x 4m). If the room is set for 60 one table will be on the dance floor. After the meal those on this table have to move and their table put away to clear the space for dancing!

## KITCHEN EQUIPMENT INVENTORY

### CUTLERY (new, hollow handled Hotel grade)

Side plate knives	73
Starter knives	68
Main Knives	74
Dessert (or starter) Forks	157
Main Forks	71
Soup Spoons	68
Dessert Spoons	64
Tea spoons	121

### Glassware:

Wine glasses	84
Champagne flutes	72
Water tumblers	84
Lager glasses (half pint)	12
Beer/Pint glasses	64

### Crockery:

Side plates (6")	65
Dessert/Starter Plates (10")	70
Main Plates (11")	95
Soup or Pudding bowls	144
11" Pasta Plates/bowls	30
Tea/coffee Cups and saucers	70
Mugs	84
Extra Pudding bowls (small)	30
Extra 11" Main plates	30

### Tableware:

Milk/Custard Jugs: 0.5 L	10
Milk/Custard Jugs: 1 L	2
Glass Water Jugs: 2 L	6
Misc assorted jugs	6
Butter Dishes with lids	10
Gravy boats	10
Sugar bowls with lids	12
Serving platters (18" rectangular)	4
Serving platters (18" round)	3
Serving platters (20" oval)	4
Large Veg bowls (15" round)	3
Glass (Pyrex) vegetable bowls	17
Large metal salad bowls	4
Blue plastic salad bowls	3
Bread baskets	6
Cheeseboard (18" round)	1
Large Tea Pot (Metal) (12 cup)	1
China Tea Pots (6 cup)	2
Salt and Pepper Mills (10 each)	20

### Plastic items for children:

Plates, pudding bowls, beakers: x 30

### SERVING ITEMS

Large dessert spoons and forks	12
Pie slices	4
Misc. large spoons/flat spatula servers	6
Soup ladles	2
Large metal Tongs	4
Plastic Salad Server tongs	4
Corkscrews	12

### Pots and Pans

Large Cooking Pots/Saucepans:	4
Frying pans (RH cupboard above sink)	2

### Kitchen items: in cupboards above sink:

Grater	1
Measuring Jugs	2
Colanders	2
Tea Towels	12
Hand towels:	6
Mixing Bowl	1
Ice Buckets	2
Chopping boards (by microwave):	4
Trays (by fridge):	8
Chefs knife block with 8 misc knives	1

(N.B. Table linen is not supplied. It can be hired from [www.gloseventhire.co.uk](http://www.gloseventhire.co.uk) who deliver and collect)

### Electrical items:

Belling electric 7 hob halogen cooker with:  
Fan oven, combination oven, Warming oven, grill  
Small fridge (under unit)  
Small freezer (under unit)  
Large Catering style Microwave  
Electric Kettle (2.5L)  
Electric water Urn (10L)

### Cleaning Items (below sink)

Henry Vacuum cleaner and attachments  
Mop and bucket  
Spare bin bags, spare Henry and Sebo vacuum bags  
Scouring pads/dishcloths  
Cleaning Chemicals  
2 Brooms and dustpans (in tall cupboard by doorway)  
plus  
Sebo Industrial vacuum cleaner (at back of Hall)

### "Party Kit" (in cupboard at back of Hall)

The old cutlery and (some) crockery has been kept for anyone to borrow for private use. While not "top" quality – it is fine for a family BBQ – or similar! Ask!

## HOW TO USE THE SOUND SYSTEM!

The sound system is in two padlocked cupboards at the back of the Hall. The 2 padlock keys are hanging behind the central pillar of the cutlery cupboards on the left in the kitchen (below the worktop). Red tag key is for the amplifier (top cupboard); White tag for the lower cupboard (Bluetooth CD player).

You can play music from CD – or from your device using Bluetooth. (Or using the spare jack cables on the top shelf to connect your device to any spare input jacks on the amplifier). We also have a Hearing Loop, plus 2 radio mic receivers: one for a Gooseneck stand mic and one for 2 handheld mics.

**First:** Switch on power at the 3 wall sockets on the right. All appliances should come on. (When finished switch off at sockets only – not individual appliances.) If required switch on fluorescent light.



**Bluetooth Pairing:** On your phone open Settings/Bluetooth and select “DN-500CB” to pair your device. (if it doesn’t show up - open bottom cupboard and check the CD player is turned on and press the “source” switch on left of CD player til the display says “BT Input Mode” (for Bluetooth Input).

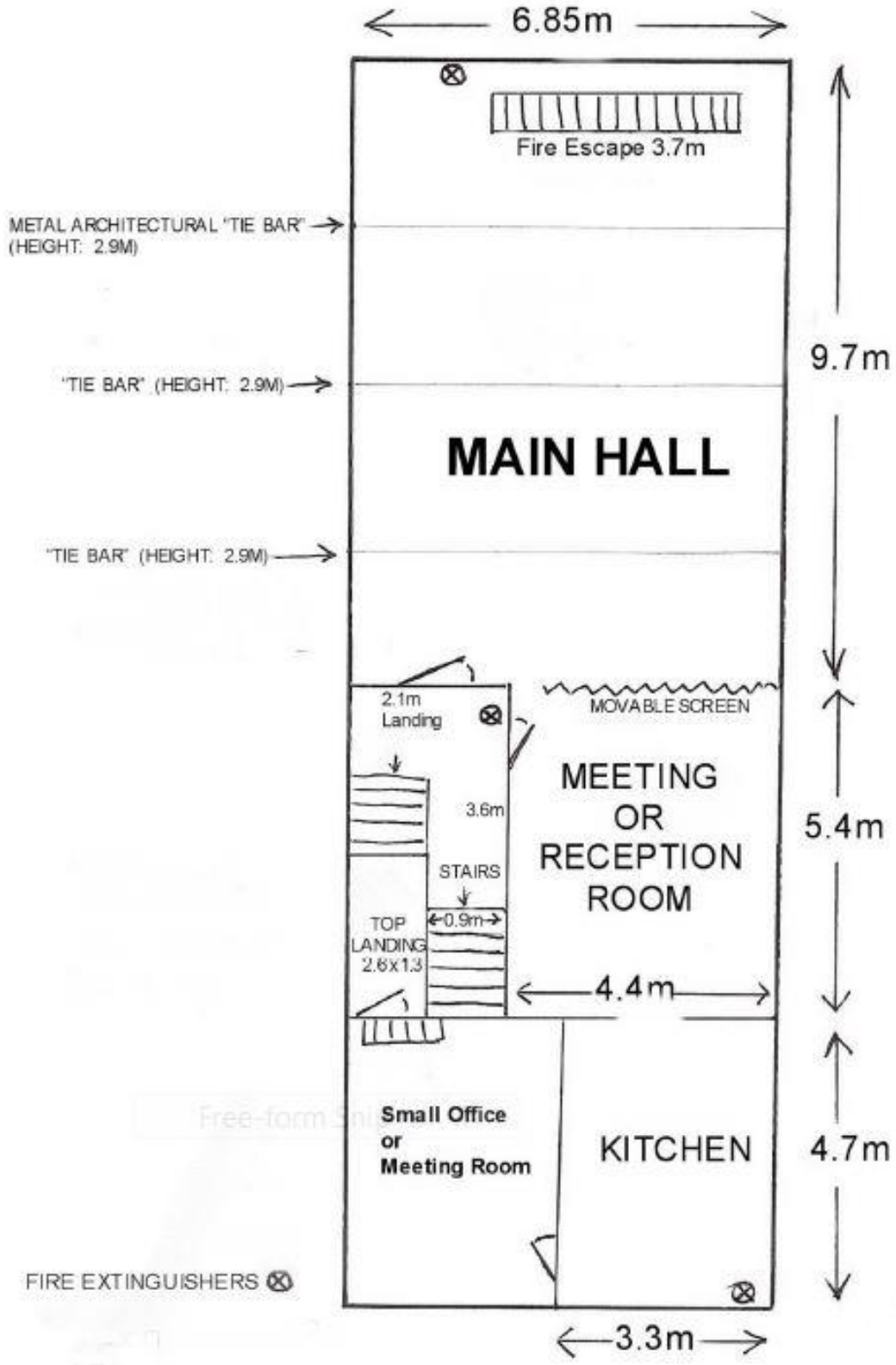
**Microphones/PA system:** We have a “gooseneck” stand radio microphone (labelled “GN”), plus 2 hand held radio mics (in the plastic briefcase in the top left cupboard). To use the GN stand mic switch on the small transmitter in the pouch hanging from the stand (Bring a spare AA battery!). Remember to switch off when finished! Instructions for the hand held mics are in the briefcase (Mic 1 and Mic 2).

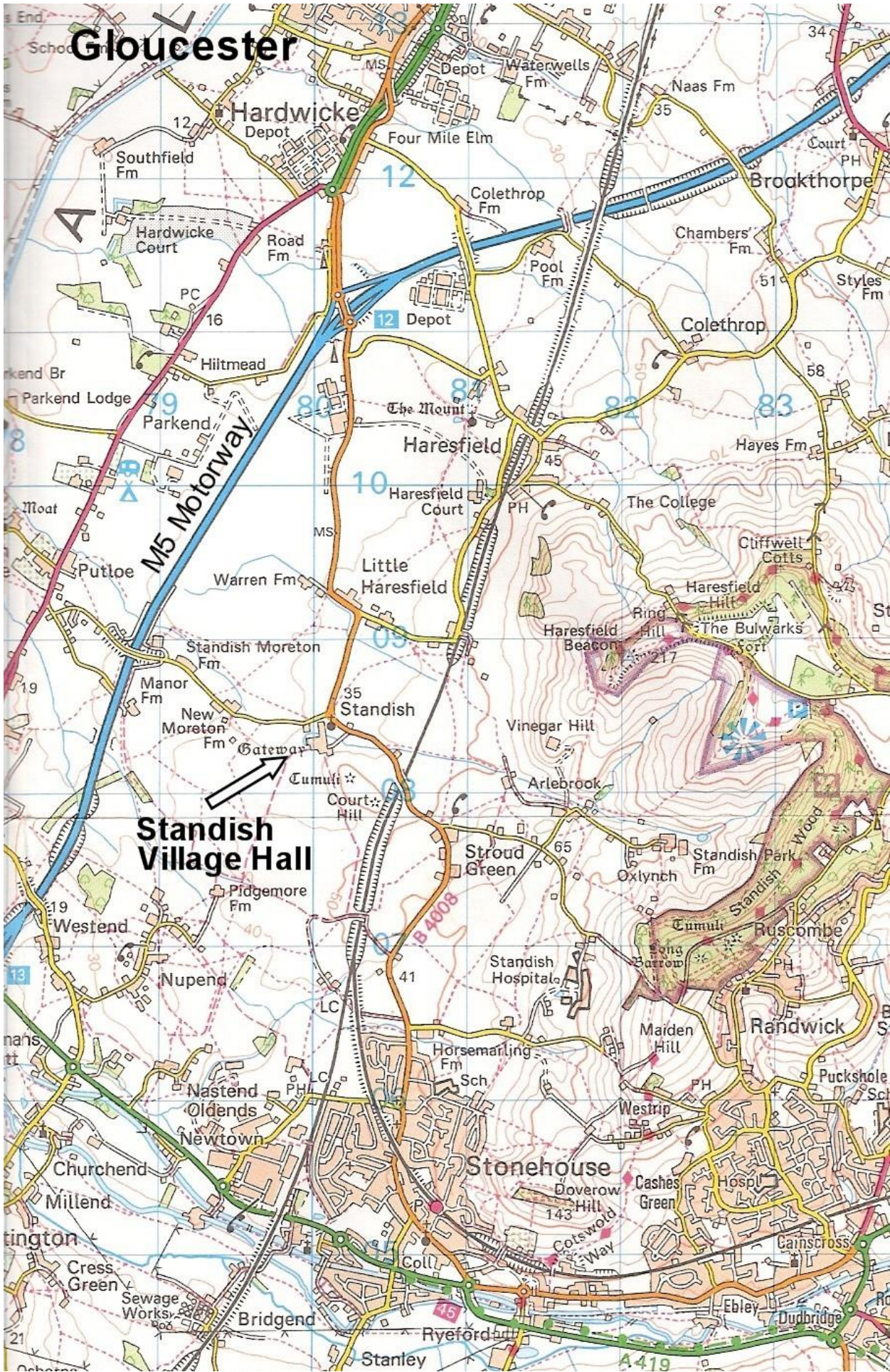
**Sound Control:** As well as the “master” volume control dial – each of the 4 appliances have individual volume controls (as labelled). You can also control volume from your device via Bluetooth – and change tracks etc. Adjust sound quality using the bass and treble control knobs.

**J.S. October 2022**

# STANDISH VILLAGE HALL

## 1ST FLOOR DIMENSIONS





For SatNav the address and post code is Standish Lane, Standish, Stonehouse GL10 3DW

# GUIDE TO PARKING AT STANDISH VILLAGE HALL

## Information for all visitors to Standish Village Hall (GL10 3DW):

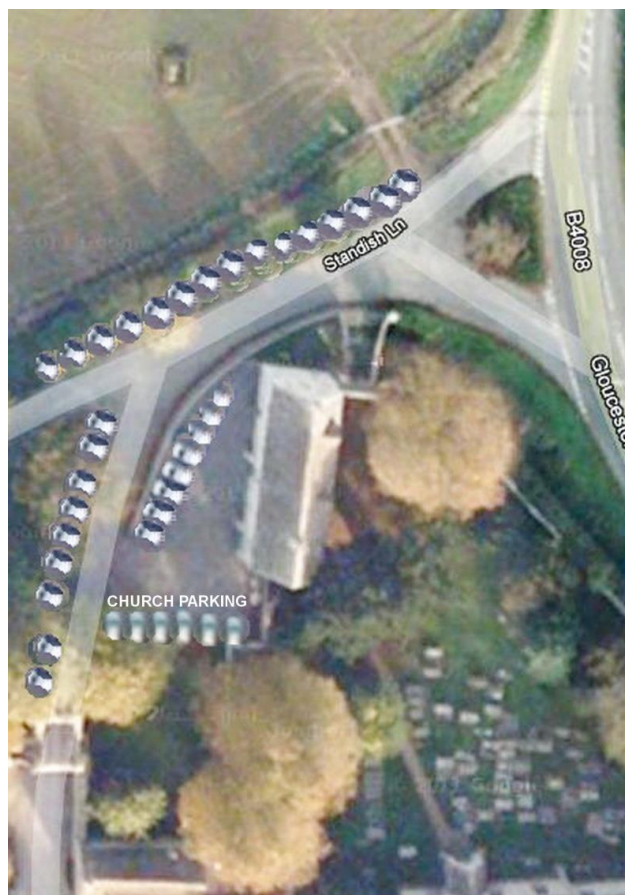
The Village Hall has a small car park which can accommodate 14 cars – if parked properly! In the first instance - it would help if visitors could car share – or hire mini buses whenever possible.

**N.B. A concurrent Church event has priority over the RH side of the car park (as you face the building).**

1) First arrivals: Please swing left and park facing the white metal railing on the left (8 cars). Do NOT park up against the building as this will block cars turning to face the railings. Then a further 6 cars can park perpendicular (not parallel) to the grassed area to the right – as above, this is reserved for con-current church events. (N.B. the grassed area adjoining the car park (a.k.a. “The Pound”) is private property.)

2) Overflow parking: When the car park is full – please park off-road on the grass under the trees opposite the Village Hall (8 cars) - and then off-road along Standish Lane (15+ cars). Please do not park on the road: we can fit in more cars if you park on the grass perpendicular (end-on) under the trees and along the Lane.

3) First arrivals (usually the organisers) who will be last to leave can safely be blocked in by later arrivals. Therefore please let your guests know if they can “double park” behind you to fit more cars in!



**N.B. PLEASE DO NOT PARK ON THE ACCESS ROAD TO THE HALL AND STONE ARCHWAY, OR THROUGH THE ARCH - THIS IS PRIVATE PROPERTY FOR RESIDENTS ONLY. ACCESS FOR EMERGENCY SERVICES MAY BE REQUIRED AT ANY TIME.**

## ACCOMMODATION NEAR STANDISH VILLAGE HALL GL10 3DW (LISTED BY PROXIMITY – NEAREST FIRST)

Airbnb in Standish: Sans Souci (1 mile) Luxury Shepherd's Hut - 4 guests - Studio - 2 beds - 1 bathroom  
[www.bit.ly/3EOoZ0s](http://www.bit.ly/3EOoZ0s) or search airbnb for "Luxury Shepherd's Hut in the Cotswolds"

Whitminster Inn (2.2 miles) Bristol Road, Whitminster, GL2 7NY  
B&B Gastropub with English, Chinese & Indian restaurants. 6 en-suite rooms.  
[www.whitminsterinn.co.uk](http://www.whitminsterinn.co.uk) 01452 740234

The Beacon Inn (2.2 miles) Haresfield GL10 3DX  
B&B 19th-century country village pub and restaurant with 5 en suite rooms.  
[www.thebeaconinn.co.uk](http://www.thebeaconinn.co.uk) 01452 728884

Stonehouse Court Hotel (3.2 miles) Bristol Rd, Stonehouse, Stroud GL10 3RA  
Upmarket 4\* Hotel - Classic rooms in a 17th-century manor  
[www.stonehousecourt.co.uk](http://www.stonehousecourt.co.uk) 0871 871 3240

Holiday Inn Express (3.3 miles) Waterwells Business Park, Davy Way, Quedgeley, Gloucester GL2 2AB  
Budget chain – clean and comfortable.  
[www.ihg.com](http://www.ihg.com) 0871 902 1544

Travelodge Stonehouse (3.8 miles) Next to Shell filling station off junction 13 of the M5. GL10 3SQ  
Budget chain – clean and comfortable.  
[www.travelodge.co.uk](http://www.travelodge.co.uk) 0871 984 6054

The King's Head, Eastington (4.4 miles) Bath Road, Eastington, Stonehouse, Gloucestershire, GL10 3AA  
smart gastro pub/restaurant with 7 en suite rooms  
[www.thekingsheadhouse.com](http://www.thekingsheadhouse.com) 01453 822277

Imperial Hotel, Stroud (5.7 miles) Station Road, Stroud GL5 3AP  
19th-century colonnaded coaching inn with simple rooms and a relaxed pub/restaurant. Located in Stroud  
Town centre next to railway station.  
[www.imperialhotelstroud.co.uk](http://www.imperialhotelstroud.co.uk) 01453 764077

Premier Inn, Stroud (5.8 miles) Stratford Lodge, Stratford Road, Stroud GL5 4AF  
Budget chain – clean and comfortable  
En-suite family rooms and on-site pub dining in a Cotswold stone lodge hotel.  
[www.premierinn.com](http://www.premierinn.com) 0871 527 9052

Hatton Court Hotel (7.4 miles) Upton Hill, Upton St Leonards, Gloucester GL4 8DE  
Upmarket 4\* Hotel  
Set in lawned gardens, with rooms and suites that mix classic style and contemporary luxury.  
[www.hatton-court.co.uk](http://www.hatton-court.co.uk) 01452 617412

There are also several hotels slightly further afield in Gloucester – approx 10 miles.)

### Local Taxis:

Stonehouse Taxis: 01453 822555      Mandyz Carz (Stonehouse) 07495 514255  
A&A Taxis: 01453 767777      Apollo Taxis: 01453 823344)



# STANDISH VILLAGE HALL

## CHURCH HOUSE: A BRIEF HISTORY



Standish Village Hall is a historic 700 year old Grade II listed building.

It was probably built in two stages: the “core” is 14th Century (probably dating from the mid 1300’s). It was added to in the 16th Century, refurbished in 1844, and Grade II listed in 1955.

**1350 A.D. (approx) – 1516:** Its original purpose was probably as a “Church House” - to provide a meeting place near the church for commercial and social activities to take place. (The footprint of a smaller building can be seen in the brickwork on the north gable end).

**The Almonry:** The Manor of Standish belonged to the monks of Gloucester and its revenues were used for charity. An Almonry was established here and the Almoner lived on the site now known as Standish Court, the entrance to which is through the pointed archway next to the car park. (The archway is also a Grade II listed structure). It is believed the Church House building was then adapted for use by the Almonry, possibly as a dormitory.

**1516 – 1536:** In 1516 the last Abbot of Gloucester, William Parker, then established a fraternity at Standish, under a Prior. However this priory disappeared after 20 years along with all the other monastic institutions under Henry VIII’s purge in the Dissolution of the Monasteries from 1536.

**1536 – 1839:** The Priory then passed into private ownership and became the property of the new Lord of the Manor and his successors. These included Sir Henry Winston, whose daughter married John Churchill, grandfather of the Duke of Marlborough, thus bringing name of Winston into the Churchill family. Although now in private ownership, the building was returned to its use as a Church House, and for the next three centuries it was again a centre of social life in the parish.

**1839 – 1964: The Village School:** In 1839 it became the village school – and remained so for the next 125 years before closing in 1964. Older residents continued to call it “The Schoolhouse”!

**1964 – Present:** After the school closed, it passed out of private ownership when it was accepted by the government in lieu of death duties from the Sherborne estate. It is now the property of the Gloucester Diocese under the jurisdiction of Standish Parochial Church Council. It is a registered charity and administered by a committee of volunteers drawn from local residents.

The ground floor is now leased as commercial office space and the rent used to help maintain the building. An extensive refurbishment was carried out from 2006 which included rewiring, new heaters, a new kitchen, a complete redecoration including new carpeting and curtains and a new lighting scheme featuring imposing baronial style antique chandeliers and wall lights. It is now very different to the traditional image of a “Village Hall”!

So once more it has become a centre for social and commercial activity – as it was 700 years ago!

In 2004 it was used as a base for Channel 4’s “Time Team” who excavated a nearby Roma Villa. (Search YouTube for: “Time Team in Standish – Going Upmarket with the Romans”)

We hope you will enjoy using a building with such a long, varied and distinguished history!

## Standish Village Hall Testimonials:

Our family party yesterday was absolutely wonderful! Your beautiful hall was perfect for us - plenty of space but still felt cosy, fabulously well equipped and organised, warm, and beautifully decorated for Christmas. We all agreed it was the perfect venue for family get-togethers. Hilary & Pete M

*The hall is absolutely excellent - the best equipped village hall I have ever seen, as I keep telling everyone! You have organised it brilliantly. The instructions are excellent and very comprehensive and I can't think of any improvements that could be made. All I can say is that I have been recommending the hall to all my friends - even though we live some distance away! - so hope you are not deluged with enquiries! With best wishes Susie*

Our naming day ceremony was perfect from the wonderful weather we had and of course the fantastic venue. We had family and friends come from all over the country and everyone complimented our choice of venue so thank you. The new kitchen is marvellous!! Many thanks - we will definitely recommend the hall. Cheryl

*We had a really lovely day and the hall was a wonderful venue and felt very welcoming and unique. It looked really beautiful with the flowers and the tables set with the beautiful table linen. Being able to serve drinks in the church yard and use the welcome shade was fantastic as it was such a hot day. I would like to say a sincere thanks to you, Den and Stan who helped out with all the practical tasks - please pass my thanks on to them. I would without doubt use the hall again if we were organising such an event again. It was so convenient for Gloucester and the M5. So a big thanks again from the newly weds for all your help and support! With many kind regards Jo*

Thanks you! The party was a success!! And as always, facilities were fantastic at the hall. It just has everything you need and more, can't think of anything else needed. I know I will be booking it again in the future. Many thanks Melissa

The village hall was fantastic as usual - thanks again - Huw had a lovely time! Melissa

Many thanks – hall was great, facilities/kitchen fantastic, on the whole things couldn't have gone better. You really do have a lovely hall there and we will try and promote it to other mums where we can as it's ideal for a children's party. Sarah

*Many thanks for making our booking of the village hall go so smoothly. The party was a great success and all commented on what a wonderful hall it is and also how well equipped it is. It certainly made life catering for 20 much easier than at home! Warmest Regards Nicki and Ian*

We had a lovely day yesterday at our daughter's christening. The village hall was absolutely wonderful and everybody commented on what a well decorated and organised hall it was. Best wishes Louise

*I recently came to an 80th birthday at the village hall and was very impressed with it (not like most village halls!) and am therefore if possible looking to book the village hall for my son and daughters birthday party on the 24th July. Annie S.*

It was fantastic, would recommend to anyone... great facilities - thank you! Annie S.