

REPORTS ON STANDISH EVENTS



Standish Harvest Supper 21/9/24

The 2024 Harvest Supper raised an amazing total of £970.36 for the Stroud Food Bank. This was made up of ticket sales £550, raffle and donations on the evening £307.86 and £112.50 in donations via BACS which included Gift Aid. Expenses of £451.74 were generously covered by the Standish Village Hall Management funds as this was a village event.

It was a splendid evening. Sixty residents and friends came and a good evening was had by all. It was really good to meet new residents and to chat with those who have lived in Standish for longer. Tickets sold out quickly so be warned and order your tickets early if there is a similar event this year! We offered a four-course meal and the food was locally sourced where possible. Some amazingly delicious dishes were produced by the wonderful working group who all worked hard to enable this event to take place. The entertainment was fun with quizzes, music and a grand raffle. Thank you to all those who contributed in any way – a great village event.

If anyone would like to join the working group for a 2025 Harvest Supper, please contact me asap! AW



Harvest Supper volunteers and menu



Memorial Concert for Gerald Hartley

In November, Harlequintet+, the small brass sextet founded by Gerald, played in Standish Church for an appreciative audience of around 100 people. £1200 was raised and split between Sue Ryder and Longfield Hospices and a childhood cancer charity established in memory of Esme, the niece of Standish residents, Chris and Laura Adlam. Esme died of cancer in September 2024. Harlequintet+ and I hope to arrange another concert in Autumn 2025. SH

Macmillan Coffee Morning

In September, a small team of volunteers hosted a Macmillan Coffee morning at the Village Hall with family fun games and competitions and an impressive array of homemade cakes. Despite a disappointing turnout on the day, we managed to raise £500, including on-line donations, for Macmillan Cancer Support. Well done team!

KEREN MATTFIELD

Standish Village Hall Report

The Village Hall was much in demand through the festive season with bookings over Christmas Day, Boxing Day and the New Year period. It is proving to be a very popular venue for that special birthday or anniversary, as well as being in use on a regular basis for daytime courses and meetings.

The hall was the selected venue for the first Global INDIE Filmmaker Awards and was such a success that it has been rebooked for the 2025 ceremony!

Once again, thanks to Alison Widgery and team, the hall hosted another magnificent Harvest Supper which was a sell-out success, raising funds for the Food Bank.

The Management Committee successfully applied to 'Take a Stand', a scheme run by Life Cycle providing free cycle stands to organisations such as the village hall. We are to be given two Sheffield stands, which will soon be installed in a corner of the car park. This will not reduce the number of available parking spaces. We hope that the cycle stands will be useful to our community and encourage more sustainable travel in Standish.

To book the Village Hall remember to visit: <http://www.standishvillage.co.uk>

IAN RICHENS



Standish Parish Council

NEWSLETTER

WINTER 2024/2025

Standish Multi-User Path: Work Begins



Residents will no doubt have noticed that work has commenced on the long-awaited multi-user path, which will run from Horsemarling roundabout to the entrance to the bridleway at Crowcumpill.

The seeds of this project were planted back in 2009, when the Standish Parish Plan made clear that residents would like to be able to move safely around the parish without resorting to their cars. For quite a while, the Parish Council scratched its head as to how to make progress. The first real opportunity came in 2017, when we secured a grant from the Police and Crime Commissioner to commission a study of the existing rights of way and to develop proposals for improvements. The study included a house-to-house survey which reaffirmed the desire for safe non-motorised travel in the parish. Following the study, a small group of residents took up the task of working with the Parish Council to identify which of the many aspirations might be achievable.

In view of likely costs, options were narrowed down to the proposal for a multi-user path alongside the B4008 between Horsemarling roundabout and Crowcumpill. Preliminary feasibility work, discussions and campaigning followed, led by the Parish Council. With the additional backing of Stroud District Council, the route was endorsed by Gloucestershire County Council in 2023. As well as providing an important section of the County Council's proposed active travel link, the 500m multi-user path has potential to link with the new housing proposed in the Local Plan at PS19a and with the existing development at Great Oldbury, via Standish footpath 6, offering a safe off-road route of approximately one mile between PS19a and Stonehouse. The path will be significant for the local community, enabling safe non-motorised travel within Standish to new facilities in PS19a, and from Great Oldbury, PS19a and local hamlets to schools, employment, railway station and the other facilities of Stonehouse. It will also enable local residents to access the existing network of footpaths and bridleways more safely.

Gloucestershire County Council and Stroud District Council provided the funding to commission the final design stage, enabling 'shovel ready' plans to be produced in the financial year 2023/4. The funding for implementation has come from several sources: the Department for Transport, County Council, Stroud District Council, the Community Infrastructure Levy fund administered by the District Council and – last but not least – the Parish Council's allocation from the Standish Gate development, which was essential in enabling us to kickstart the project. The first section of the multi-user path, now underway, will be delivered in 2024/25, with a further stage to be completed following work to repair a collapsing culvert at the Crowcumpill end of the path.

A well-attended public share event, held in September 2024, enabled local people to raise some important issues and concerns, which the County Council representatives took away to investigate further. Many people and organisations have contributed to the success of this project over the years, but without a small and dedicated local group it would not have come about. Special mention is due to Sue Oppenheimer and Alison Widgery, who have worked long and hard with me to ensure the path came into being. SUE HARTLEY

Road Safety Issues and Standish Lane Fingerpost

Following a recent head-on crash over the railway bridge on the B4008, the Parish Council contacted Gloucestershire County Council Highways, asking whether additional signage could be added on the western side of the bridge in order to try and reduce vehicle speeds.

We have been advised that there have been two serious incidents on the bridge in recent years – one in 2022 and the recent one before Christmas 2024, which was caused by a speeding driver travelling from the Stonehouse direction. In addition, the Road Safety Team has reviewed the situation and advised that the signage is correct and correctly positioned for the road layout. They will continue to monitor accident data for this site alongside others across the county.

The Parish Council has been concerned for some time about the state of the railings alongside the Arle Brook on Standish Lane and reviewed the situation there with the Area Highways Manager earlier in 2024. He referred the matter to the Highways Infrastructure Team, who removed the weeds growing alongside the railings, to assess the problem further. Since then the bank has eroded further due to the heavy winter rains. We continue to voice our concerns to Highways and to our County Councillor, and await works to improve the safety of this narrow stretch of the lane.

There is an old-fashioned fingerpost sign, dating back to the 1950s, on the traffic island at the entrance to Standish Lane. It has been dilapidated for some time but has fallen into an even worse state of repair over this winter. The Parish Council has ascertained that it is able to refurbish it, rather than have a modern replacement, and has located a provider that manufactures the necessary spare parts for them. The Council will be funding the necessary work done to retain and renovate the fingerpost, and preserve this little piece of Standish history. OLIVER KIRKHAM



MEET THE COUNCILLORS



SUE HARTLEY
CHAIR

01452 724000
suehartley@outlook.com



OLIVER KIRKHAM
VICE CHAIR

07887 793464
okirkham@googlemail.com



ANDREAS BIERMANN

07397 530503
a.biermann@gmail.com



SARDAR KHAN

07930 040762
sardaruk@gmail.com



JOHN PARKER

07841 920188
john@trees.org.uk



ALISON WIDGERY

07974 117960
ajwidgery1@gmail.com

Design & Print by Qwertyop.co.uk | Printed on 100% recycled paper

English Devolution and Local Government

As residents will have seen in the national news, the Government has decided that we will no longer have two tier local authorities (in our case, Stroud District and Gloucestershire County Councils) but instead will move to unitaries. A unitary must have a population of at least 500,000 and, as Gloucestershire currently has a population of 659,000, the new unitary authority looks likely to sit within the same boundary (though this is not finally decided). Gloucestershire would then have to get together with other unitaries to form a strategic authority of 1.5 million people. This will be headed by a mayor with devolved powers for housing, planning, transport, energy, skills, and employment support, with the objective of driving growth. To achieve the 1.5 million target, Gloucestershire could combine with Herefordshire and Worcestershire, Oxfordshire or the already-established West of England Combined Authority (South Gloucestershire, Bristol and BANES).

The number of councillors for the Gloucestershire Unitary is likely to be 110, so double the current number of county councillors. However, there would be no district councillors so services and democratic access are likely to seem more remote than at present.

Of particular interest has been the question of whether there would be County Council elections, according to the current timetable, in May 2025. The Conservative administration applied to the Secretary of State for the elections to be deferred until the unitary is established. 5 of the 6 district councils wrote to the Secretary of State (SoS) asking for the elections to go ahead. The SoS decided on 5th February that elections would go ahead in Gloucestershire. 9 counties have had their 2025 elections cancelled. Our elections in May, will elect councillors for a 2-year term, with further elections held in 2027 for a council carrying out the current county council functions only. District Councils will cease to exist in 2028.

It is complicated but these changes are going to affect us all. The changes will also have an impact on parish councils, with some responsibilities likely to transfer from district councils. It will probably be some time before we know any more details about this. **SH**

2025-26 Budget

The January meeting of the Parish Council set its budget for the coming year. Its precept for 2025-26 will be £16,326, giving an increase in income of £463 over the previous year. The Council decided not to increase the Council Tax payable by each household, meaning Standish residents will not have seen an increase for 3 years. We are able to keep the Council Tax steady due to a small increase in the number of households at Green Walk and careful management of your money. The Council Tax payable at Band D remains £63.42. The Council's budget for 2025-26 can be viewed on the Standish Village website under the Parish Council's heading, Financial Audits and General Finance.

As part of its budget-setting, the Council decided to increase Terry Hefferman's (parish handyperson) hours from 8 to 10 per month. Terry works hard to keep the parish looking good. Much more of his time than we would wish is spent on the essential task of clearing litter. **SH**

Commemorative trees

Recently, the Parish Council has become aware that two of the commemorative trees in Standish Lane require plaques, as the originals have been lost through the passage of time. One of these is the acer on the traffic island at the entrance to Standish Lane from the B4008, which was planted to celebrate the Coronation of Queen Elizabeth II in 1953. The tree is in good condition and there is a photo in the Village Hall photograph archive (copied here) recording the event.

The second unmarked tree is the oak on the patch of land opposite New Moreton Farm. This was planted in 2013 in honour of the Queen's Diamond Jubilee.

There is a silver birch on the village green, planted in 1977 to commemorate the Queen's Silver Jubilee. It already has a plaque.

A rowan tree was planted on the village green in 2019 to celebrate long-time Parish Councillor Stan Dicker and his service to the Parish. Its plaque is also in situ.

Plaques will be ordered and installed for the two unmarked trees. **OK**

Green Walk Updates

Natural Play Area: PJ Livesey recently submitted a variation to the approved plan for the natural play area to Stroud District Council. The developer has been advised, in essence, that they need to stick to the original plan. That is what they now intend to do. The plan can be viewed on site or on Stroud District Council's planning portal at S.22/1317/VAR

Defibrillator has been installed. It is mounted to the outside wall of the store near the Main Building.

Parish Council noticeboard: this has been purchased by the Parish Council and will be installed soon.

Information Boards have been installed. Parish councillors and Stonehouse History Group put a lot of work into ensuring that all the information was correct and hope that the boards will be of interest to residents and visitors to the site. They can be viewed on site or on the planning portal at S.24/2229/DISCON

Water flow on the bridlepath: the site team continues to monitor and review this as part of the ongoing works.

"Residents only" signage: the "PRIVATE - RESIDENTS ONLY" sign on Beatrice Webb Lane has been removed.

Bridleway: we understand that the route will be resurfaced within the next six months.

Horsemarling Lane: works are due to commence within the next 6 months, subject to ongoing dialogues with Gloucestershire County Council Highway Officers. **SH**

CLIMATE EMERGENCY: CALCULATE YOUR ENVIRONMENTAL IMPACT

We can all help build a better world by making small changes in our everyday lives.

The news that global heating is likely to rise to 2C above preindustrial levels by 2045 (James Henson Columbia University USA in a study published in the journal Environment) is alarming. The climate crisis has already supercharged extreme weather across the world and this has, hopefully, made us all stop to consider what we can do to help our planet. We've seen the devastating impact that human activity can have on the natural world, but it doesn't have to be this way. You can start by calculating your footprint to understand your personal impact. I have been looking at Carbon Calculators for both personal and community data.

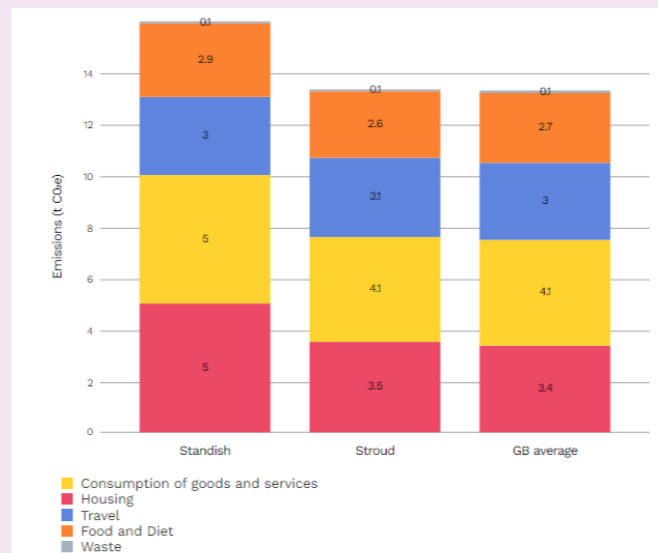


World Wide Fund for Nature's My Footprint App (Download WWF's My Footprint app | WWF) is easy to use but a bit simplistic, however it leads to some well-researched ways to help us improve our personal carbon footprint. Using this app is a step in the right direction to keep us motivated to make sustainable choices. *Did you know that even a tumble dryer with an A++ rating can consume 1kwh for half a cycle - which is equivalent to boiling a full kettle 30+ times?*

Once you have calculated your personal impact, you'll be able to see how you compare to the UK average and to the world, as well as understand which parts of your lifestyle contribute the most to your score.

How does the Standish carbon footprint compare with Stroud and with GB?

Here is the Standish community's carbon footprint, calculated by the Centre for Sustainable Energy and the University of Exeter: <https://impact-tool.org.uk/report?regionId=E04013010&geography=parish>



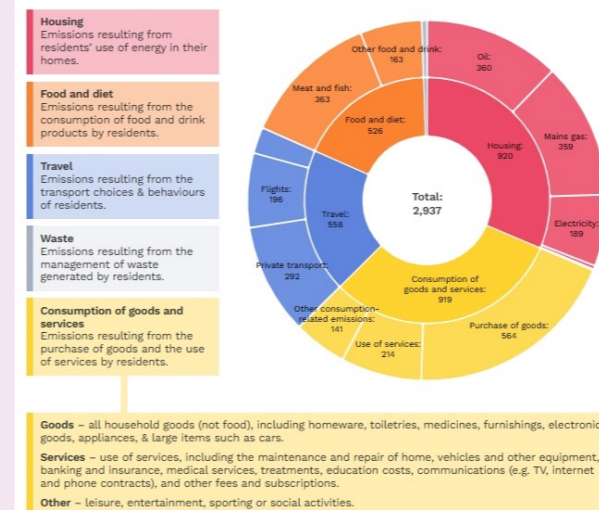
Here is what the average consumption footprint for our area looks like per household, and how this compares with the district average and the national average. There is more information in the App, but some of the main issues in Standish, as in many 'old' villages, are the high energy demands in older buildings and the need to de-carbonise heating.

Footprint information can guide us to where we should target our efforts to reduce emissions and have the greatest impact. To help us think about what to do next with our footprint information, in each section of the report there are change targets for reaching net zero, and some questions to help us think about possible areas for action. Details about retrofitting older properties can be found here <https://severnwyke.org.uk/> including information about retrofit and installation support, heat pumps, solar panels, condensation, making your boiler more efficient, grants, energy surveys as well as 101 tips for an energy efficient lifestyle! <https://severnwyke.org.uk/advice-support/resources-energy-efficiency-at-home/> **ALISON WIDGERY**



Tree Planting Ceremony, to celebrate Coronation of Queen Elizabeth II, 1953

This figure shows the annual carbon emissions (measured in tonnes CO₂e) emitted as a result of the different activities that residents within your parish's boundary engage in - from heating to eating.



Discover Energy Efficiency & EV Solutions for Your Home!

drive & thrive
Plug into the future.

Cirencester Market Place & The Corn Hall
Thursday, 6th March 2025 | 10am - 4pm

- **Test Drive Electric Vehicles:** Experience the latest EVs!
- **Save Money & Find Grants:** Home energy efficiency made easy.
- **Trade Show:** Discover innovative products and expert advice.
- **Talks & Expert Panels:** Learn to save and go green.

Free Entry!
For tickets scan the code or register now at: cotswold.gov.uk/driveandthrive